

The information contained within this document is accurate at the date specified and is subject to change. Please view the listing online for the most up-to-date information.

## 1820 20 AVENUE FOR SALE

Commercial Real Estate > Commercial Property for Sale

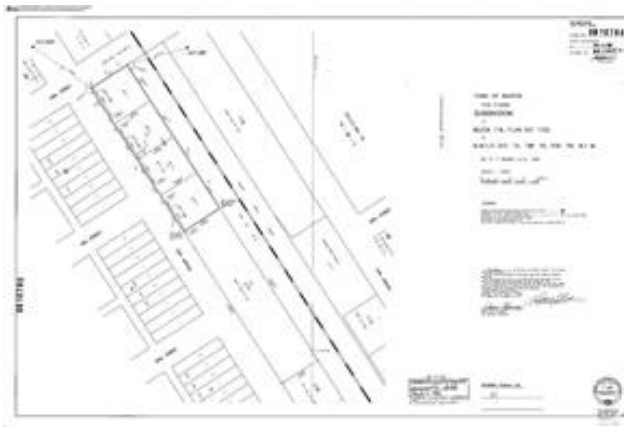


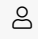
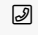
**Location**  
Nanton, Alberta


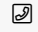
**Listing ID:**  
27377


**MLS ID:**  
A2188695

**\$250,000**



 **VICTOR CZOP**  
 (403) 646-2910

 Lively Realty Ltd.  
 403-646-2910

 1820 20 Avenue , Nanton , Alberta T0L 1R0

<b>Transaction Type</b> For Sale	<b>Title</b> Fee Simple	<b>Days On Market</b> 102
<b>Zoning</b> M-DWT	<b>Subdivision</b> NONE	<b>Nearest Town</b> Nanton
<b>Structure Type</b> None	<b>Property Type</b> Commercial	<b>Property Sub Type</b> Mixed Use
<b>Legal Plan</b> 9910780	<b>Building Area (Sq. Ft.)</b> 0.00	<b>Building Area (Sq. M.)</b> 0.00
<b>Lot Features</b> Backs on to Park/Green Space,City Lot,Level,Near Golf Course	<b>Access to Property</b> On Major Traffic Route,Paved Road,Public	<b>Inclusions</b> None
<b>Restrictions</b> Call Lister	<b>Reports</b> Other Documents	

Located on the north bound Highway # 2: There is two (2) 100 ft by 100 ft commercial lots available. These 2 lots are being sold as a single parcel. Each has a Land Title. Lots are flat and rectangular. Combined this gives you a Frontage of 200 Feet and a depth of 100 Feet. Services are at the property lot line. Excellent location for the business that would like highway frontage location. This is a Land Sale only. Should you be an interested buyer, an additional 2 lots of this same size could be available that are located next to it. The full 4 lot parcel would extend to the Intersection of Highway 533 and # 2, giving you 400 feet of frontage and a depth of 100 feet and the choice of connection of 1 to 4 separate services. These additional 2 lot costs can be negotiated. There are few lots of this size available in the Town of Nanton, especially close to the downtown area and nearby sport facilities in Nanton.

**Disclaimer** - It is your responsibility to perform the appropriate due diligence to verify information provided by users or third parties on this website or in subsequent interactions. For more information see our website's [Terms of Use](#).

Data is supplied by Pillar 9™ MLS® System. Pillar 9™ is the owner of the copyright in its MLS® System. Data is deemed reliable but is not guaranteed accurate by Pillar 9™. The trademarks MLS®, Multiple Listing Service® and the associated logos are owned by The Canadian Real Estate Association (CREA) and identify the quality of services provided by real estate professionals who are members of CREA. Used under license.