

The information contained within this document is accurate at the date specified and is subject to change. Please view the listing online for the most up-to-date information.

1125 TABLE MOUNTAIN STREET

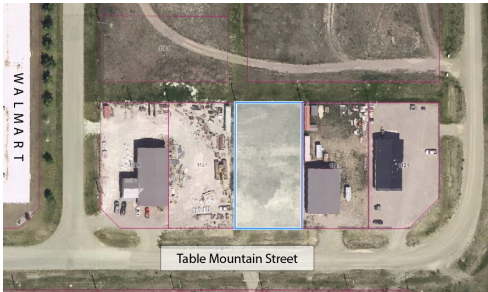
Commercial Real Estate > Commercial Property for Sale


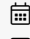
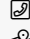
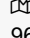


Location
Pincher Creek, Alberta

Listing ID:
26701

\$83,260



 PincherCreek
 Dec 15, 2022
 (403) 627-3156


962 Saint John Avenue Box 159, Pincher Creek , Alberta T0K 1W0

Zoning
I1 - General Industrial and Warehousing

Legal Plan
Plan 0613747 Block 7 Lot 3

Lot Size (Sq. Ft.)
21739

Great location behind Walmart! This property is zoned I1 - General Industrial and Warehousing. This zoning can accommodate a wide range of predominantly light industrial and warehousing uses; selected commercial uses; and where possible, other industrial uses which may:

- be considered noxious or hazardous since they involve operations, processes or
- substances which require safety or other precautions;
- require special precautions and/or siting to minimize land use conflicts;
- require exceptionally large lots; or
- require careful consideration because they require services beyond those which are readily available.

Perfect for

- Agricultural/industrial machinery sales, rental and service
- Automotive repair and service
- Fleet and transportation service, major and minor
- Signs
- Vehicle sales and rentals
- Wholesale or storage warehousing

Disclaimer - It is your responsibility to perform the appropriate due diligence to verify information provided by users or third parties on this website or in subsequent interactions. For more information see our website's [Terms of Use](#).